

Labour Force (ABS Cat No 6202.0)

Latest month: August 2017

Release date: 14 September 2017

Next release date: 19 October 2017

All data referred to in the commentary below are trend data, which are recommended for smaller jurisdictions like Tasmania. However, seasonally adjusted and original data have been presented in some tables of this release for comparative purposes.

Due to rounding, the sum of some estimates, such as changes in full-time and part-time employment, may not sum to the aggregate estimates.

Features

Tasmanian employment was estimated to have increased by 600 persons (0.2 per cent) from the previous month to 246 500 persons in August 2017. Nationally, employment also increased by 0.2 per cent over the same period.

The estimated level of employment in Tasmania in August 2017 was 9 600 persons (4.0 per cent) above the level recorded in August 2016.

Full-time employment was estimated to have increased by 100 persons (0.1 per cent) to 155 100 persons in August 2017 compared to the previous month and was 2 100 persons (1.4 per cent) above the level one year earlier.

Part-time employment was estimated to have increased by 500 persons (0.5 per cent) to 91 400 persons in August 2017 compared to the previous month and was up 7 500 persons (or 8.9 per cent) from the level in August 2016.

The number of unemployed persons in Tasmania was estimated to have increased by 100 persons (or 0.7 per cent) to 15 900 persons in August 2017 compared to the previous month, but was 800 persons (4.6 per cent) lower than in August 2016.

The estimated unemployment rate in Tasmania was 6.1 per cent in August 2017, up 0.1 of a percentage point from the previous month, but 0.5 of a percentage point below the level one year earlier (Chart 2). Tasmania's estimated trend unemployment rate was 0.5 of a percentage point higher than the national rate in August 2017.

Table 1: Labour force, Tasmania and Australia, August 2017, trend and seasonally adjusted data

Trend	Tas	Aus
Level of employment ('000)	246.5	12 249.5
Monthly employment growth (%)	0.2	0.2
Unemployment rate (%)	6.1	5.6
Participation rate (%)	61.3	65.2
Seasonally adjusted		
Level of employment ('000)	245.8	12 269.0
Monthly employment growth (%)	0.4	0.4
Unemployment rate (%)	6.0	5.6
Participation rate (%)	61.1	65.3

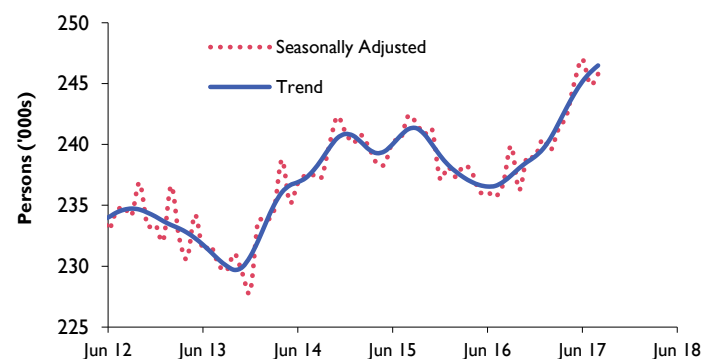
SOURCE: LABOUR FORCE, ABS CAT NO 6202.0: TABLE 12

Table 2: Labour force by jurisdiction, August 2017, trend data

Trend	Emp cf Jul 17 (%)	UR (%)	PR (%)
NSW	0.2	4.9	63.7
Vic	0.1	6.1	66.2
Qld	0.4	6.0	65.5
SA	0.2	6.1	62.3
WA	0.2	5.5	68.0
Tas	0.2	6.1	61.3
NT	-1.0	3.6	73.3
ACT	0.1	4.7	70.8
Aus	0.2	5.6	65.2

SOURCE: LABOUR FORCE, ABS CAT NO 6202.0: TABLE 12

Chart 1: Tasmanian employment, trend and seasonally adjusted data



SOURCE: LABOUR FORCE, ABS CAT NO 6202.0: TABLE 12

Labour Force (ABS Cat No 6202.0)

Latest month: August 2017

Tasmania's estimated unemployment rate in August 2017 was equal highest in the country, along with South Australia and Victoria (also at 6.1 per cent).

The estimated participation rate in Tasmania was 61.3 per cent in August 2017, up 0.1 of a percentage point from July 2017 and 1.6 percentage points higher than the rate in August 2016. In August 2017, the gap between the Tasmanian and national participation rates was 3.9 percentage points (Chart 3). Some of this gap is due to Tasmania's older population structure.

Tasmania's labour force was estimated to have increased by 700 persons to 262 400 persons in August 2017 compared to the previous month and was 8 800 persons higher the level one year earlier.

Recent performance

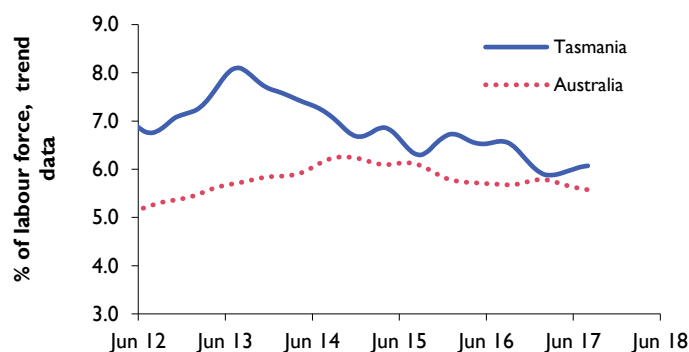
The total estimated trend employment level declined from October 2015 to June 2016 due to decreases in both male and female employment. However, the level of total employment has increased since that time, mostly due to increasing female employment. The current estimated level of employment of 246 500 persons represents a series peak.

Through the year to August 2017, total male employment increased by 2.3 per cent (3 000 persons), due to an increase in male part-time employment (up 3 000 persons to 27 200 persons). Male full-time employment was unchanged at 102 000 persons over that period.

Total female employment increased by 6.0 per cent (6 600 persons) through the year to August 2017, due to an increase in both female full-time employment (up 2 100 persons to 53 100 persons) and female part-time employment (up 4 500 persons to 64 100 persons) over the same period.

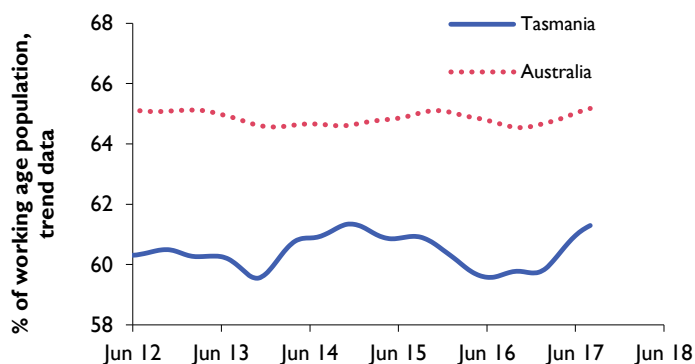
The male participation rate in Tasmania was up 0.8 of a percentage point through the year to August 2017 to 65.4 per cent, while the female participation rate increased by 2.5 percentage points to 57.3 per cent over the same period.

Chart 2: Unemployment rates, Tasmania and Australia, trend data



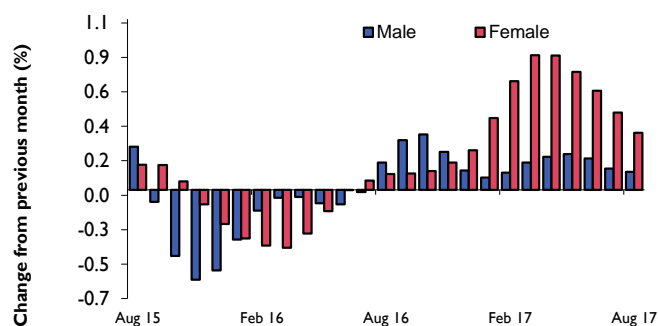
SOURCE: LABOUR FORCE, ABS CAT NO 6202.0: TABLE 12

Chart 3: Participation rates, Tasmania and Australia, trend data



SOURCE: LABOUR FORCE, ABS CAT NO 6202.0: TABLE 12

Chart 4: Growth in male and female employment, Tasmania, trend data



SOURCE: LABOUR FORCE, ABS CAT NO 6202.0: TABLE 12

Labour Force (ABS Cat No 6202.0)

Latest month: August 2017

Table 3: Key labour force data, Tasmania and Australia

	Tasmania				Australia			
	Aug 16	Jun 17	Jul 17	Aug 17	Aug 16	Jun 17	Jul 17	Aug 17
Employment, trend ('000)	236.9	245.2	245.9	246.5	11 942.2	12 189.4	12 222.4	12 249.5
monthly change ('000)	0.3	1.0	0.7	0.6	3.0	37.1	33.0	27.1
monthly change (%)	0.1	0.4	0.3	0.2	0.0	0.3	0.3	0.2
annual change (%)	-1.8	3.6	3.9	4.0	1.5	2.1	2.4	2.6
Employment, sa* ('000)	236.8	247.0	244.9	245.8	11 943.3	12 185.5	12 214.7	12 269.0
monthly change ('000)	1.1	1.9	-2.1	0.9	-24.3	21.8	29.2	54.3
monthly change (%)	0.5	0.8	-0.9	0.4	-0.2	0.2	0.2	0.4
annual change (%)	-2.3	4.6	3.9	3.8	1.5	2.1	2.1	2.7
Employment, original+ ('000)	238.2	240.3	241.0	241.8	11 904.7	12 031.5	12 052.3	12 079.4
year-average change (%)	-0.8	0.5	1.0	1.5	2.2	1.3	1.4	1.5
Unemployment, trend ('000)	16.7	15.6	15.8	15.9	720.0	727.2	725.3	723.2
monthly change ('000)	0.1	0.2	0.2	0.1	-0.9	-3.0	-1.9	-2.1
Unemployment, sa* ('000)	18.3	14.8	16.5	15.8	719.7	728.5	728.5	727.5
monthly change ('000)	3.1	-1.1	1.7	-0.7	-8.0	14.6	0.0	-1.0
Unemployment, original+ ('000)	16.7	15.7	15.8	15.6	732.0	727.8	728.0	728.5
year-average change (%)	-3.6	-5.5	-4.2	-6.5	-4.4	-1.9	-1.1	-0.5
Unemployment rate, trend (%)	6.6	6.0	6.0	6.1	5.7	5.6	5.6	5.6
monthly change (pp)	0.0	0.0	0.0	0.1	0.0	-0.1	0.0	0.0
Unemployment rate, sa* (%)	7.2	5.6	6.3	6.0	5.7	5.6	5.6	5.6
monthly change (pp)	1.1	-0.5	0.7	-0.3	0.0	0.1	0.0	0.0
Unemployment rate, original+ (%)	6.6	6.1	6.2	6.1	5.8	5.7	5.7	5.7
year-average change (pp)	-0.1	-0.4	-0.3	-0.5	-0.4	-0.2	-0.1	-0.1
Participation rate, trend (%)	59.7	61.0	61.2	61.3	64.6	65.0	65.1	65.2
monthly change (pp)	0.1	0.3	0.2	0.1	-0.1	0.1	0.1	0.1
Participation rate, sa* (%)	60.0	61.2	61.1	61.1	64.6	65.0	65.1	65.3
monthly change (pp)	1.0	0.2	-0.1	0.0	-0.3	0.1	0.1	0.2
Participation rate, original+ (%)	60.1	60.0	60.2	60.3	65.0	64.7	64.7	64.8
year-average change (pp)	-1.0	-0.3	0.0	0.2	0.2	-0.3	-0.2	-0.2

*SEASONALLY ADJUSTED
+ YEAR-AVERAGE

SOURCE: LABOUR FORCE, ABS CAT NO 6202.0: TABLE 12

Labour Force (ABS Cat No 6202.0)

Latest month: August 2017

Table 3: Key labour force data, Tasmania and Australia (continued)

	Tasmania				Australia			
	Aug 16	Jun 17	Jul 17	Aug 17	Aug 16	Jun 17	Jul 17	Aug 17
Labour force, trend ('000)	253.6	260.8	261.7	262.4	12 662.2	12 916.6	12 947.8	12 972.7
monthly change (%)	0.2	0.5	0.4	0.3	0.0	0.3	0.2	0.2
annual change (%)	-1.5	3.1	3.4	3.5	1.0	2.0	2.3	2.5
Labour force, sa* ('000)	255.1	261.8	261.4	261.6	12 663.0	12 914.0	12 943.3	12 996.4
monthly change (%)	1.7	0.3	-0.2	0.1	-0.3	0.3	0.2	0.4
annual change (%)	-1.3	3.5	4.2	2.5	1.0	2.0	2.0	2.6
Labour force, original+ ('000)	254.9	256.0	256.9	257.4	12 636.7	12 759.3	12 780.3	12 807.9
year-average change (%)	-1.0	0.1	0.7	1.0	1.8	1.2	1.2	1.4
Participation rate, trend (%)								
Male	64.6	65.1	65.2	65.4	70.3	70.6	70.7	70.7
monthly change (pp)	0.1	0.3	0.1	0.2	-0.1	0.1	0.1	0.0
annual change (pp)	-1.4	0.7	0.7	0.8	-0.7	0.1	0.3	0.4
Female	54.8	57.0	57.2	57.3	59.1	59.6	59.7	59.8
monthly change (pp)	0.0	0.3	0.2	0.1	-0.1	0.1	0.1	0.1
annual change (pp)	-1.2	2.1	2.3	2.5	0.0	0.3	0.5	0.7
Employment, trend ('000)								
Full-time	153.0	154.6	155.0	155.1	8 135.0	8 336.6	8 366.8	8 388.3
monthly change (%)	-0.5	0.3	0.2	0.1	-0.1	0.4	0.4	0.3
annual change (%)	-1.8	0.1	0.8	1.4	0.1	2.3	2.8	3.1
share of employed persons (%)	64.6	63.1	63.0	62.9	68.1	68.4	68.5	68.5
Part-time	83.9	90.5	90.9	91.4	3 807.2	3 852.8	3 855.6	3 861.2
monthly change (%)	1.3	0.5	0.4	0.5	0.3	0.1	0.1	0.1
annual change (%)	-1.8	10.2	9.8	8.9	4.5	1.8	1.5	1.4
share of employed persons (%)	35.4	36.9	37.0	37.1	31.9	31.6	31.5	31.5
Male	126.3	128.9	129.1	129.3	6 397.4	6 515.4	6 528.4	6 538.3
monthly change (%)	0.2	0.2	0.1	0.1	0.0	0.2	0.2	0.2
annual change (%)	-2.1	2.2	2.4	2.3	1.1	1.9	2.1	2.2
share of employed persons (%)	53.3	52.6	52.5	52.4	53.6	53.5	53.4	53.4
Female	110.6	116.2	116.8	117.2	5 544.8	5 674.0	5 694.0	5 711.3
monthly change (%)	0.1	0.6	0.5	0.4	0.0	0.4	0.4	0.3
annual change (%)	-1.4	5.2	5.7	6.0	1.9	2.3	2.7	3.0
share of employed persons (%)	46.7	47.4	47.5	47.6	46.4	46.5	46.6	46.6

*SEASONALLY ADJUSTED
+ YEAR-AVERAGE

SOURCE: LABOUR FORCE, ABS CAT NO 6202.0, TABLE 12

This Data Release is not to be reproduced or altered without the permission of the Economic Analysis Unit.

Contact Details
Economic Analysis Unit
Economic.Analysis@treasury.tas.gov.au

