

Regional Population Growth (ABS Cat No 3218.0)

Latest period: 2016-17

Release date: 24 April 2018

Next release date: 27 March 2019

This data release describes sub-State level population estimates on a Local Government Area (LGA) basis. Please note that the ABS publication provides various other sub-State regional groupings, which can be accessed via the ABS publication.

All estimates in this data release are at 30 June of each year. Estimates for 2017 are preliminary, estimates for 2012 through 2016 are revised from previous publications, while estimates are final for 2001 to 2011.

Tasmania and its regions

As at 30 June 2017, the ABS estimated that Tasmania's total population grew by 3 289 persons (or 0.6 per cent) to 520 877 persons compared to the previous year (Table 1). Tasmania's population, as a proportion of Australia's population, was 2.1 per cent as at 30 June 2017.

Through the year to 30 June 2017 the majority of population growth was in the Hobart and South East region (Table 1). Over the past decade, this region has grown at a faster rate than the other two regions, contributing the majority of growth at a state-level (Chart 1).

Local government areas

As at 30 June 2017, the LGA with the largest population in Tasmania was Launceston, which accounted for 12.9 per cent of Tasmania's estimated total population. This was followed by Clarence (10.7 per cent), Hobart (10.0 per cent) and Glenorchy (9.0 per cent) (Table 2).

In absolute terms, Clarence experienced the largest growth of 574 persons through the year to 30 June 2017, followed by Kingborough (up 471 persons), Hobart (up 441 persons) and Glenorchy (up 393 persons).

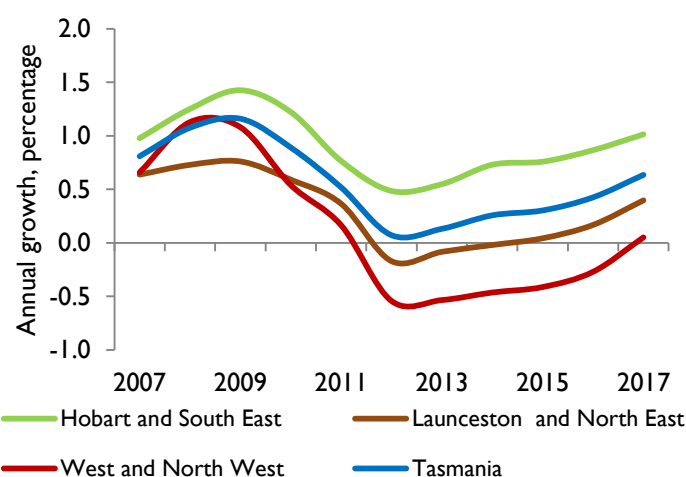
As at 30 June 2017, the LGAs with the strongest yearly growth in percentage terms were Flinders and Sorell (both up 1.8 per cent), Brighton (up 1.6 per cent), and Huon Valley and Latrobe (both up 1.5 per cent) (Chart 2).

Table 1: Population change by region, as at 30 June 2017, original data

Original Data	Population	Change of	
	(persons)	previous year	(%)
Hobart and South East	265 147	2 662	1.0
Launceston and North East	144 107	570	0.4
West and North West	111 623	57	0.1
Tasmania	520 877	3 289	0.6

SOURCE: REGIONAL POPULATION GROWTH, ABS CAT NO 3218.0

Chart 1: Tasmania's population size by LGA, as at 30 June 2017, original data



SOURCE: REGIONAL POPULATION GROWTH, ABS CAT NO 3218.0

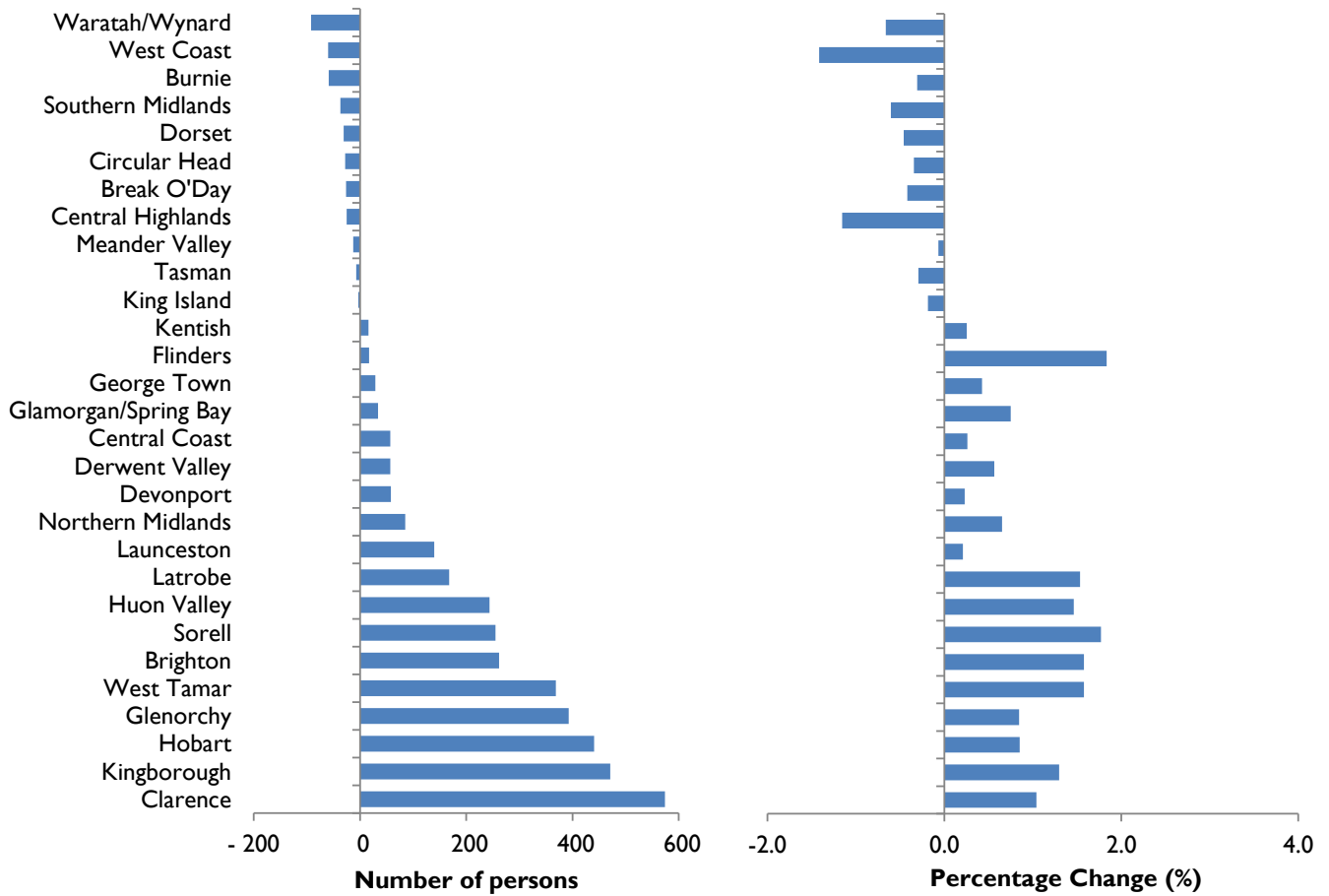
Of the 29 LGAs in Tasmania, 11 experienced a decline in population through the year to 30 June 2017. Waratah/Wynyard recorded the most significant population decrease in absolute terms (down 92 persons), followed by West Coast (down 60 persons).

Through the year to 30 June 2017, the LGAs with the greatest percentage decline in population were the West Coast (down 1.4 per cent) and Central Highlands (down 1.2 per cent) (Chart 2).

Regional Population Growth (ABS Cat No 3218.0)

Latest period: 2016-17

Chart 2: Population change by LGA, 30 June 2016 to 30 June 2017, original data



SOURCE: REGIONAL POPULATION GROWTH, ABS CAT NO 3218.0

Regional Population Growth (ABS Cat No 3218.0)

Latest period: 2016-17

Table 2: Key data by LGA, Tasmanian Population, original data

Original Data	Estimated Population		Change		Share
	June 16 (persons) Revised	June 17 (persons) Preliminary	in Population (persons)	(%)	June 17 (%)
Break O'Day	6 193	6 167	-26	-0.4	1.2
Brighton	16 610	16 872	262	1.6	3.2
Burnie	19 304	19 245	-59	-0.3	3.7
Central Coast	21 851	21 908	57	0.3	4.2
Central Highlands	2 164	2 139	-25	-1.2	0.4
Circular Head	8 173	8 145	-28	-0.3	1.6
Clarence	55 085	55 659	574	1.0	10.7
Derwent Valley	10 091	10 148	57	0.6	1.9
Devonport	25 259	25 317	58	0.2	4.9
Dorset	6 746	6 715	-31	-0.5	1.3
Flinders	926	943	17	1.8	0.2
George Town	6 817	6 846	29	0.4	1.3
Glamorgan/Spring Bay	4 521	4 555	34	0.8	0.9
Glenorchy	46 397	46 790	393	0.8	9.0
Hobart	51 750	52 191	441	0.9	10.0
Huon Valley	16 675	16 919	244	1.5	3.2
Kentish	6 303	6 319	16	0.3	1.2
King Island	1 617	1 614	-3	-0.2	0.3
Kingborough	36 263	36 734	471	1.3	7.1
Latrobe	10 940	11 108	168	1.5	2.1
Launceston	66 864	67 004	140	0.2	12.9
Meander Valley	19 596	19 583	-13	-0.1	3.8
Northern Midlands	13 043	13 128	85	0.7	2.5
Sorell	14 393	14 648	255	1.8	2.8
Southern Midlands	6 140	6 103	-37	-0.6	1.2
Tasman	2 396	2 389	-7	-0.3	0.5
Waratah/Wynyard	13 883	13 791	-92	-0.7	2.6
West Coast	4 236	4 176	-60	-1.4	0.8
West Tamar	23 352	23 721	369	1.6	4.6
Tasmania	517 588	520 877	3 289	0.6	100.0

Note: Discrepancies in tables between totals and sums of components are due to rounding.
SOURCE: REGIONAL POPULATION GROWTH, ABS CAT NO 3218.0

This Data Release is not to be reproduced or altered without the permission of the Economic Analysis Unit.

Contact Details
Economic Analysis Unit
Economic.Analysis@treasury.tas.gov.au

