

JobSeeker Payment and Youth Allowance Recipients

Latest month: April 2025

Release date: 16 May 2025

Next release date: 20 June 2025

The JobSeeker Payment and Youth Allowance recipients monthly profile is a monthly report, covering the Income Support payments of JobSeeker Payment and Youth Allowance (other). It is released by the Department of Social Services.

From 20 March 2020, the JobSeeker Payment replaced the Newstart Allowance. Persons who would have previously claimed Bereavement Allowance, Sickness Allowance or Wife Pension now claim the JobSeeker Payment. The reclassification of these payments reflects a break in the time series for State-level data from March 2020.

From December 2022, the report introduced expanded reporting populations for income support recipients. As a result, the reporting population for Jobseeker Payment has changed to include recipients who are current but on zero rate of payment and those who are suspended from payment. The reporting population for Youth Allowance has changed to include those who are suspended from payment. The expanded report replaced the standard report from June 2023.

The data presented in this release are original data from an administrative dataset and can be affected by calendar-related and irregular influences. As no adjustment is made to these data, the values presented in this release can be volatile.

Recent performance

The number of individuals receiving income support in Tasmania decreased by 0.2 per cent in April 2025 compared with the previous month. Nationally, the number of recipients increased by 0.3 per cent in the same period (Table 1).

Compared with one year earlier, Tasmania recorded an increase of 6.8 per cent in the number of income support recipients in April 2025. Nationally, the number of recipients increased by 8.4 per cent over the same period (Table 1).

Table 1: Number of benefit payment recipients by jurisdiction, April 2025, original data

Original	Number ('000s)	Monthly change (%)	Annual change (%)
NSW	278.3	0.3	7.3
Vic	232.2	0.4	13.0
Qld	218.2	0.8	7.0
SA	82.2	-0.3	5.5
WA	106.0	0.1	8.7
Tas	26.1	-0.2	6.8
NT	24.0	-0.8	1.8
ACT	9.3	0.3	13.6
Aus	976.5	0.3	8.4

SOURCE: DATA.GOV.AU JOBSEEKER PAYMENT AND YOUTH ALLOWANCE RECIPIENTS - MONTHLY PROFILE TABLE 3 (EXPANDED)

Table 2: Number of individuals receiving benefit payments as a proportion of the population and labour force by jurisdiction, April 2025, original data

Original	As a proportion of population (%)	As a proportion of labour force (%)
NSW	3.3	5.9
Vic	3.3	5.8
Qld	3.9	6.9
SA	4.4	8.2
WA	3.6	6.2
Tas	4.5	8.9
NT	9.4	16.5
ACT	2.0	3.3
Aus	3.6	6.4

SOURCE: DATA.GOV.AU JOBSEEKER PAYMENT AND YOUTH ALLOWANCE RECIPIENTS - MONTHLY PROFILE TABLE 3 (EXPANDED); LABOUR FORCE, ABS CAT NO 6202.0: TABLE 12; AND NATIONAL, STATE AND TERRITORY POPULATION, ABS CAT NO 3101.0: TABLE 4

JobSeeker Payment and Youth Allowance Recipients

Latest month: April 2025

All other jurisdictions also recorded an increase in the number of income support recipients in April 2025 compared with one year earlier. In percentage terms, the Australian Capital Territory recorded the largest increase (up 13.6 per cent) (Table 1).

The number of Tasmanian residents receiving income support accounted for 8.9 per cent of Tasmania's labour force in April 2025, compared with 6.4 per cent nationally (Table 2). Tasmania had the second-highest rate of individuals receiving income support of all jurisdictions as a proportion of its labour force in this period, behind the Northern Territory.

The number of Tasmanians receiving income support in April 2025 comprised around 4.5 per cent of the State's population, compared with 3.6 per cent nationally (Table 2).

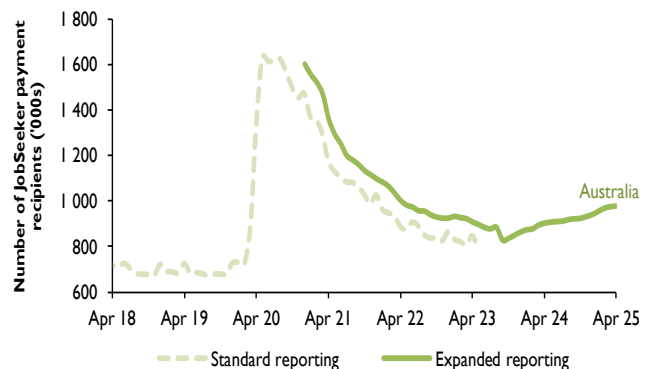
At a regional level, the number of income support recipients decreased by 0.5 per cent in the Hobart and South East Region, and by 0.3 per cent in the Launceston and North East Region, but increased by 0.5 per cent in the West and North West Region, compared with the previous month (Table 3).

It should be noted that the regional data cited here and in Table 3 are compiled by information at the small Statistical Area 2 (SA2) level. The Department of Social Services rounds data at the SA2 level to preserve confidentiality, so small changes in regions from month to month may not be significant.

Analysis

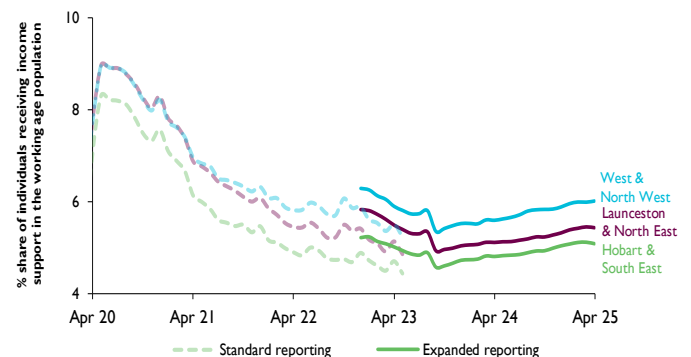
JobSeeker and Youth Allowance payment recipient data differ from the unemployment estimates from the ABS Labour Force Survey due to different definitions and enumeration methods. While the estimates are not directly comparable, the series generally tend to move together. Mutual obligation requirements were relaxed for individuals receiving the JobSeeker Payment in response to the COVID-19 pandemic. These mutual obligations were reinstated as a mandatory requirement from 28 September 2020.

Chart 1: Number of benefit payment recipients ('000s), Australia, original data



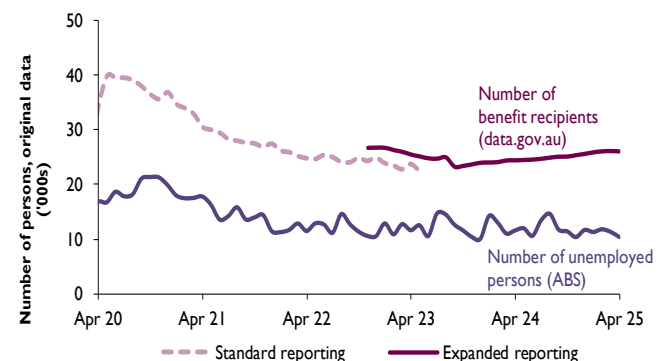
SOURCE: DATA.GOV.AU JOBSEEKER PAYMENT AND YOUTH ALLOWANCE RECIPIENTS - MONTHLY PROFILE TABLE 2 (STANDARD), TABLE 1 (EXPANDED)

Chart 2: Share of the working age population receiving benefit payments by region, original data



SOURCE: DATA.GOV.AU JOBSEEKER PAYMENT AND YOUTH ALLOWANCE RECIPIENTS - MONTHLY PROFILE TABLE 4 (STANDARD), TABLE 5 (EXPANDED); AND LABOUR FORCE DETAILED, ABS CAT NO 6291.0.55.001, TABLE 16

Chart 3: Number of income support payments and level of unemployment, Tasmania, original data



SOURCE: DATA.GOV.AU JOBSEEKER PAYMENT AND YOUTH ALLOWANCE RECIPIENTS - MONTHLY PROFILE TABLE 2 (STANDARD), TABLE 3 (EXPANDED); AND LABOUR FORCE, ABS CAT NO 6202.0: TABLE 12

JobSeeker Payment and Youth Allowance Recipients

Latest month: April 2025

Table 3: Number of JobSeeker and Youth Allowance payment recipients, Tasmania, original data

	Apr 24	Feb 25	Mar 25	Apr 25
Number of recipients				
Total*	24 395	26 070	26 125	26 060
Hobart & South East	12 065	12 905	12 930	12 860
Brighton	1 240	1 385	1 395	1 375
Central Highlands (Tas.)	1 190	1 210	1 235	1 220
Hobart - North East	1 870	1 935	1 910	1 940
Hobart - North West	3 080	3 300	3 315	3 320
Hobart - South and West	900	995	995	980
Hobart Inner	1 625	1 760	1 745	1 710
Huon - Bruny Island	1 075	1 165	1 180	1 165
Sorell - Dodges Ferry	730	790	795	795
South East Coast	355	365	360	355
Launceston and North East	6 700	7 130	7 175	7 155
Launceston	4 110	4 405	4 445	4 420
Meander Valley - West Tamar	985	1 050	1 060	1 045
North East	1 605	1 675	1 670	1 690
West and North West	5 615	6 035	6 035	6 065
Burnie - Ulverstone	2 480	2 650	2 645	2 675
Devonport	2 215	2 425	2 425	2 410
West Coast	920	960	965	980
Monthly percentage change				
Total	0.0	0.7	0.2	-0.2
Hobart & South East	-0.1	0.8	0.2	-0.5
Brighton	-1.2	1.1	0.7	-1.4
Central Highlands (Tas.)	0.4	0.0	2.1	-1.2
Hobart - North East	0.5	0.0	-1.3	1.6
Hobart - North West	-1.3	1.2	0.5	0.2
Hobart - South and West	1.1	1.0	0.0	-1.5
Hobart Inner	0.3	1.7	-0.9	-2.0
Huon - Bruny Island	-1.8	0.4	1.3	-1.3
Sorell - Dodges Ferry	2.8	0.6	0.6	0.0
South East Coast	2.9	-1.4	-1.4	-1.4
Launceston and North East	0.0	0.7	0.6	-0.3
Launceston	-0.1	0.3	0.9	-0.6
Meander Valley - West Tamar	-1.0	0.5	1.0	-1.4
North East	0.9	1.8	-0.3	1.2
West and North West	-0.1	0.7	0.0	0.5
Burnie - Ulverstone	-0.2	1.0	-0.2	1.1
Devonport	0.0	0.4	0.0	-0.6
West Coast	0.0	0.5	0.5	1.6

* The breakdown of job seekers by region may not add to totals due to rounding.

SOURCE: DATA.GOV.AU JOBSEEKER PAYMENT AND YOUTH ALLOWANCE RECIPIENTS - MONTHLY PROFILE TABLE 5 (EXPANDED)

Data in this release have been sourced from the Department of Social Services and are available on the data.gov.au website.

This Data Release is not to be reproduced or altered without the permission of the Economic Policy Branch.