

Construction Work Done (Preliminary) (ABS Cat No 8755.0)

Latest quarter: September quarter 2018

Release date: 28 November 2018

Next release date: 27 February 2019

These data provide an early indication of trends in building and engineering construction activities. More comprehensive estimates will be released in Engineering Construction Activity (ABS Cat No 8762.0, due for release on 16 January 2019) and in Building Activity (ABS Cat No 8752.0, due for release on 16 January 2019).

Recent performance

The estimated real value of total construction work done in Tasmania increased by 4.4 per cent in the September quarter 2018 in trend terms (Table 1), and was 17.9 per cent above the estimated level in the September quarter 2017 (Table 2).

Nationally, the real trend value of total construction work done in the September quarter 2018 remained unchanged (Table 1), but was 5.6 per cent above the estimated level in the September quarter 2017 (Table 2).

The increase in Tasmania's total construction work done in the September quarter 2018 compared to the previous quarter was due to an increase in the real value of building construction work done (up 6.1 per cent), and an increase in the real value of engineering work done (up 2.1 per cent) (Table 1).

The estimated real value of building work done in Tasmania improved from mid 2013 to early 2016, and eased to late 2017 from which point an upturn has been evident. The real value of engineering construction work done has increased in recent quarters and is now above 2013 activity levels (Chart 2).

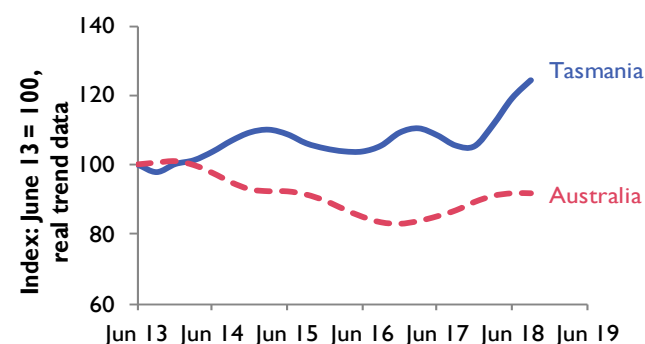
In the year to the September quarter 2018, the estimated nominal value of residential building work done in Tasmania increased by 24.6 per cent, and non-residential building work done increased by 4.3 per cent in the same period (Table 2).

Table 1: Work done by jurisdiction, September quarter 2018, real trend data

Real trend	Building		Engineering		Total	
	value \$m	qtrly % chg	value \$m	qtrly % chg	value \$m	qtrly % chg
NSW	10 287	1.4	6 470	3.3	16 757	2.1
Vic	9 572	2.4	4 468	2.2	14 040	2.4
Qld	5 138	-2.6	5 247	-1.8	10 376	-2.3
SA	1 579	1.6	1 608	-1.3	3 186	0.1
WA	2 444	-5.7	4 400	-2.1	6 852	-3.3
Tas	403	6.1	344	2.1	747	4.4
NT	251	-3.3	783	-25.7	1 035	-21.2
ACT	775	7.6	217	-3.5	989	4.6
Aus	30 470	0.7	23 511	-0.8	53 980	0.0

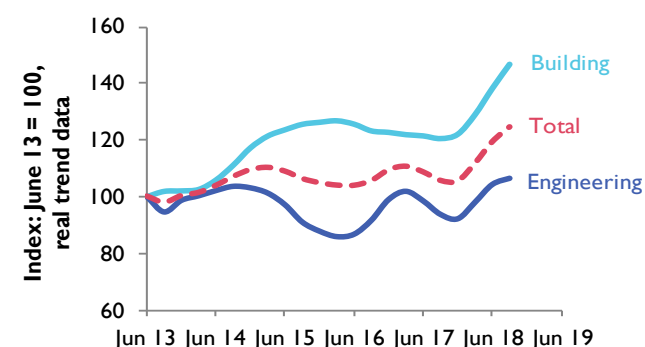
SOURCE: CONSTRUCTION WORK DONE (PRELIMINARY), AUSTRALIA, ABS CAT NO 8755.0: TABLE 8

Chart 1: Value of total construction work done, real trend data



SOURCE: CONSTRUCTION WORK DONE (PRELIMINARY), AUSTRALIA, ABS CAT NO 8755.0: TABLE 8

Chart 2: Value of work done for Tasmania, real trend data



SOURCE: CONSTRUCTION WORK DONE (PRELIMINARY), AUSTRALIA, ABS CAT NO 8755.0: TABLE 8

Construction Work Done (Preliminary)

Latest quarter: September quarter 2018

Table 2: Construction work done, Tasmania and Australia

	Tasmania				Australia			
	Sep 2017	Mar 2018	Jun 2018	Sep 2018	Sep 2017	Mar 2018	Jun 2018	Sep 2018
Total Construction Work Done								
(Engineering + Building)								
Quarterly value (\$million, real trend*)	634	671	716	747	51 104	53 558	53 977	53 980
quarterly change (%)	-2.8	5.9	6.8	4.4	2.0	2.0	0.8	0.0
annual change (%)	0.0	1.0	9.9	17.9	4.1	8.6	7.7	5.6
Year-to total value (\$million, nominal original)	2 591	2 638	2 690	2 885	218 533	229 147	231 662	222 221
year-to change (%)	3.5	3.5	1.4	11.3	9.3	17.0	15.1	1.7
Engineering Construction Work Done								
Quarterly value (\$million, real trend*)	303	317	337	344	22 224	23 671	23 708	23 511
quarterly change (%)	-4.8	6.3	6.4	2.1	3.9	2.2	0.2	-0.8
annual change (%)	2.2	-3.8	5.9	13.6	7.4	14.0	10.9	5.8
Year-to total value (\$million, nominal original)	1 253	1 272	1 248	1 347	103 001	110 152	109 849	98 235
year-to change (%)	8.9	5.4	-4.5	7.5	15.3	33.1	25.4	-4.6
Building Work Done								
(Residential + Non-Residential)								
Quarterly value (\$million, real trend*)	331	354	379	403	28 873	29 891	30 270	30 470
quarterly change (%)	-0.8	5.7	7.1	6.1	0.6	1.8	1.3	0.7
annual change (%)	-2.2	5.8	13.7	21.7	1.6	4.8	5.4	5.5
Year-to total value (\$million, nominal original)	1 338	1 366	1 442	1 538	109 102	111 854	112 636	112 863
year-to change (%)	-1.1	1.8	7.2	15.0	10.1	7.3	6.3	3.4
Residential Building Work Done								
Quarterly value (\$million, nominal original)	187	204	236	247	19 657	18 532	21 041	21 343
quarterly change (%)	9.9	7.8	15.6	4.7	2.0	-4.7	13.5	1.4
annual change (%)	6.9	21.0	38.2	31.7	1.9	6.3	9.2	8.6
Year-to total value (\$million, nominal original)	703	751	816	876	76 050	76 899	78 668	80 354
year-to change (%)	-7.5	5.2	18.2	24.6	3.8	1.9	3.9	5.7
Non-Residential Building Work Done								
Quarterly value (\$million, nominal original)	145	122	181	182	10 690	9 882	11 171	11 177
quarterly change (%)	-14.8	-31.4	49.1	0.1	5.6	-13.3	13.1	0.0
annual change (%)	-12.2	-24.1	6.4	25.0	16.1	9.8	10.4	4.6
Year-to total value (\$million, nominal original)	635	615	626	662	39 482	42 095	43 145	43 632
year-to change (%)	7.3	-2.1	-4.4	4.3	6.0	11.7	13.5	10.5

* REFERENCE YEAR FOR CHAIN VOLUME MEASURES IS 2015-16

SOURCE: CONSTRUCTION WORK DONE (PRELIMINARY), AUSTRALIA, ABS CAT NO 8755.0: TABLES 6-9

This Data Release is not to be reproduced or altered without the permission of the Economic Analysis Unit.

Contact Details
Economic Analysis Unit
Economic.Analysis@treasury.tas.gov.au

