

Regional Labour Markets (ABS Cat No 6291.0.55.001)

Latest month: October 2018

Release date: 22 November 2018

Next release date: 21 December 2018

The ABS publishes estimates for Hobart and the South East region separately. They have been combined for the purposes of this release and estimates of the participation rate for this combined region have been derived from other sources.

Monthly original estimates are highly volatile at a regional level and consequently year-average original figures are reported. Trend and seasonally adjusted data are not available for regional labour market data.

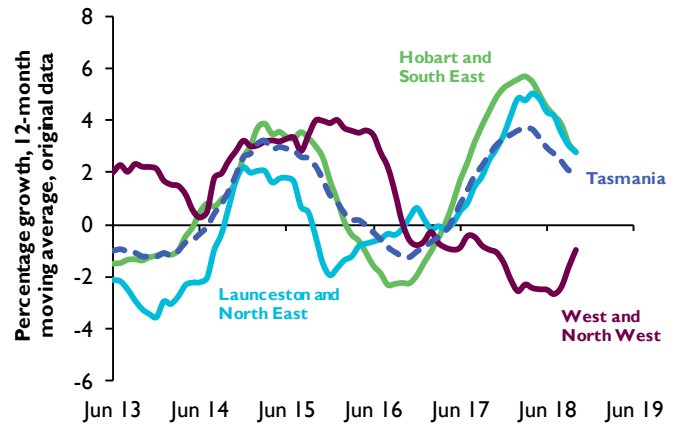
Recent performance

The ABS estimated that employment increased by 2.0 per cent (in original percentage terms) overall in Tasmania in the year to October 2018, compared to the previous year. In the year to October 2018, the Hobart and South East region recorded an increase (up 2.8 per cent or 3 500 persons), as did the Launceston and North East region (up 2.8 per cent or 1 800 persons), while the West and North West region recorded a decrease (down 1.0 per cent or 500 persons) compared to the previous year (Chart 1).

The ABS estimated that the year-average unemployment rate decreased by 0.1 of a percentage point in Tasmania in the year to October 2018, compared to the same period one year earlier. The year-average unemployment rate decreased in the Launceston and North East region (down 0.9 of a percentage point), while for the West and North West region (up 0.6 of a percentage point) and the Hobart and South East region (up 0.1 of a percentage point) it increased in the same period.

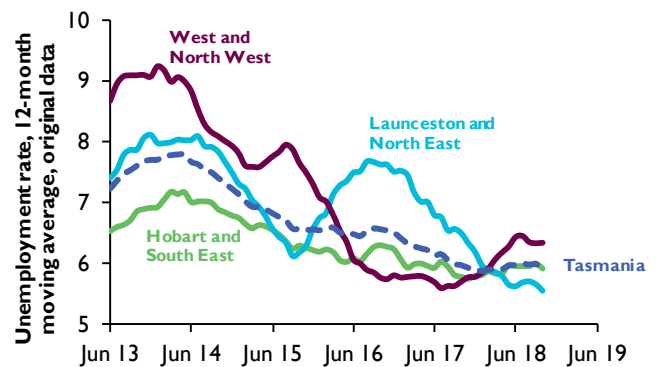
The ABS estimated that in the year to October 2018, the overall participation rate in Tasmania increased by 0.4 of a percentage point compared to the previous year. The participation rate decreased in the West and North West region (down 0.4 of a percentage point), while Hobart and the South East region (up 0.9 percentage points), as well as Launceston and the North East region (up 0.5 of a percentage point), increased in the same period.

Chart 1: Regional employment growth, 12-month moving average, Tasmania, original data



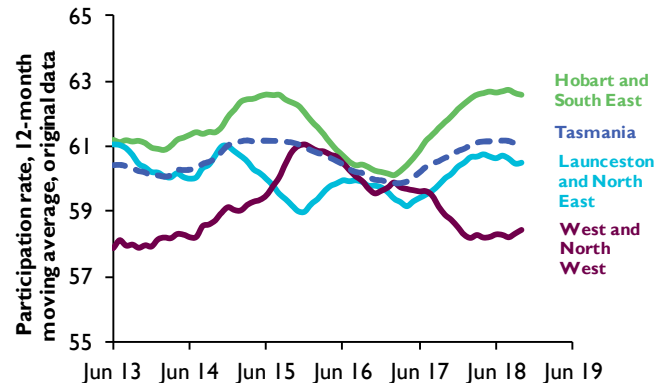
SOURCE: LABOUR FORCE, DETAILED, ABS CAT NO 6291.0.55.001: TABLE 16

Chart 2: Regional unemployment rates, 12-month moving average, Tasmania, original data



Source: labour force, detailed, abs cat no 6291.0.55.001: TABLE 16

Chart 3: Regional participation rates, 12-month moving average, Tasmania, original data



SOURCE: LABOUR FORCE, DETAILED, ABS CAT NO 6291.0.55.001: TABLE 16

Regional Labour Markets (ABS Cat No 6291.0.55.001)

Latest month: October 2018

Table 1: Tasmanian regional labour markets, original data

<i>Original data, year-average</i>	Oct 17	Aug 18	Sep 18	Oct 18
Employment ('000)				
Hobart and South East	126.6	130.0	129.9	130.1
Launceston and North East	66.8	68.6	68.5	68.6
West and North West	50.9	50.2	50.3	50.4
Tasmania	244.3	248.7	248.7	249.1
Employment, change from prev year average ('000)				
Hobart and South East	5.3	4.8	3.9	3.5
Launceston and North East	1.6	2.4	2.0	1.8
West and North West	-0.5	-1.2	-0.9	-0.5
Tasmania	6.4	5.9	5.1	4.8
Employment, change from prev year average (%)				
Hobart and South East	4.3	3.9	3.1	2.8
Launceston and North East	2.4	3.5	3.0	2.8
West and North West	-1.0	-2.4	-1.7	-1.0
Tasmania	2.7	2.4	2.1	2.0
Participation rate (%)				
Hobart and South East	61.7	62.7	62.6	62.6
Launceston and North East	60.0	60.6	60.5	60.5
West and North West	58.9	58.2	58.3	58.5
Tasmania	60.7	61.2	61.1	61.1
Participation rate, pp change from prev year				
Hobart and South East	1.3	1.4	1.0	0.9
Launceston and North East	0.2	1.0	0.7	0.5
West and North West	-0.8	-1.3	-0.9	-0.4
Tasmania	0.6	0.7	0.5	0.4
Unemployment rate (%)				
Hobart and South East	5.8	6.0	6.0	5.9
Launceston and North East	6.5	5.7	5.7	5.6
West and North West	5.7	6.3	6.3	6.3
Tasmania	6.0	6.0	6.0	5.9
Unemployment rate, pp change from prev year				
Hobart and South East	-0.5	0.1	0.2	0.1
Launceston and North East	-1.1	-0.8	-0.9	-0.9
West and North West	0.0	0.7	0.7	0.6
Tasmania	-0.6	0.0	0.0	-0.1

SOURCE: LABOUR FORCE, DETAILED, ABS CAT NO 6291.0.55.001: TABLE 16

This Data Release is not to be reproduced or altered without the permission of the Economic Analysis Unit.